

	40,0	44,0	45,0	46,0	50,0	50,0	54,0	55,0	56,0	m
R_{max}	40,0	44,0	45,0	46,0	50,0	50,0	54,0	55,0	56,0	
DTA	15600	13000	13600	12500	10900	12500	11100	11200	10200	kg
F4-F2	17160	14300	14960	12980	11990	12870	12210	12320	11220	kg
STF	16200	13600	14200	12400	10300	12400	10500	10600	9600	kg
F4	17820	14960	15620	13640	11330	13640	11550	11660	10560	kg

(1) Jib lengths from 56 m to 50 m and counterjib length 18,4 m, HUU3-13
 Jib lengths from 50 m to 34 m and counterjib length 16,4 m, HUU3-13, HUU3A-11, HUU3-11

臂长从56m到50m,平衡臂长18.4m,HUU3-13
 臂长从50m到34m,平衡臂长16.4m,HUU3-13,HUU3A-11,HUU3-11

Tower configurations see
 塔机的组合参见

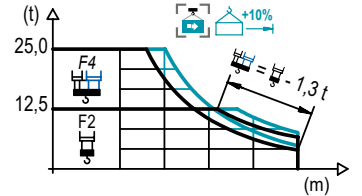
CM-DS-202209-022

LOAD CHART

载荷曲线 / Diagrama de cargas / Diagramme de charges / Диаграмма распределения нагрузки

DTA

R	25,0 t			F4					F2					↔(m) ↓(kg)		
	25,0 t	12,5 t		20,0	25,0	30,0	35,0	40,0	44,0	45,0	46,0	50,0	54,0		55,0	56,0
RctJ 18,4 m	56,0	23,1	41,9	46,6	25000	22890	18550	15490	13220	12500	12500	12500	11560	10620	10410	10200
		25,2	45,7	50,8	25000	25000	20460	17120	14640	13070	12720	12500	12500	11680	11440	11220
	55,0	24,7	44,8	49,8	25000	24640	20000	16730	14300	12760	12500	12500	12440	11430	11200	
		26,9	48,8	54,3	25000	25000	22060	18480	15830	14150	13770	13420	12500	12500	12320	
54,0	24,1	43,6	48,5	25000	23920	19400	16220	13860	12500	12500	12500	12080	11100			
	26,2	47,5	52,0	25000	25000	21400	17920	15340	13700	13340	13000	12500	12210			
50,0	25,6	46,5	50,0	25000	25000	20900	17500	14970	13370	13010	12680	12500				
	27,7	49,1		25000	25000	22840	19160	16410	14680	14290	13930	12870				
RctJ 16,4 m	50,0	21,9	39,7	44,2	25000	21510	17410	14520	12500	12500	12240	11950	10900			
		23,9	43,2	48,1	25000	23700	19220	16070	13720	12500	12500	12500	11990			
	46,0	23,8	43,1	46,0	25000	23590	19130	15990	13650	12500	12500	12500				
		25,7	45,1		25000	25000	20930	17520	14990	13390	13030	12980				
	45,0	26,1	44,1		25000	25000	21330	17860	15280	13660	13600					
		28,3	44,1		25000	25000	23350	19590	16790	15020	14960					
44,0	24,6	43,1		25000	24530	19910	16650	14230	13000							
	26,6	43,1		25000	25000	21800	18260	15640	14300							
40,0	26,0	39,1		25000	25000	21230	17780	15600								
		28,2	39,1		25000	25000	23280	19530	17160							

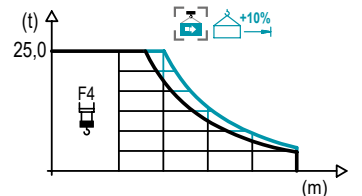


LOAD CHART

载荷曲线 / Diagrama de cargas / Diagramme de charges / Диаграмма распределения нагрузки

STF

R	25,0 t			F4											↔(m) ↓(kg)
	25,0 t			20,0	25,0	30,0	35,0	40,0	44,0	45,0	46,0	50,0	54,0	55,0	
RctJ 18,4 m	56,0	24,0		25000	23900	19520	16440	14140	12690	12370	12060	10950	10020	9800	9600
		26,0		25000	25000	21350	17990	15490	13920	13570	13230	12030	11010	10780	10560
	55,0	25,6		25000	25000	21010	17700	15240	13690	13340	13010	11830	10830	10600	
		27,8		25000	25000	22980	19380	16710	15020	14640	14280	13000	11910	11660	
54,0	25,0	25000	24970	20410	17190	14800	13280	12950	12630	11480	10500				
	27,1		25000	22330	18820	16220	14580	14210	13860	12610	11550				
50,0	26,7		25000	21970	18520	15960	14340	13980	13630	12400					
	29,0		25000	24060	20310	17510	15750	15360	14980	13640					
RctJ 16,4 m	50,0	22,8	25000	22560	18420	15490	13320	11940	11640	11350	10300				
		24,9	25000	24670	20160	16980	14610	13120	12780	12470	11330				
	46,0	24,6	25000	24540	20060	16890	14530	13040	12720	12400					
		26,7		25000	21980	18530	15960	14340	13980	13640					
	45,0	27,1		25000	22310	18810	16210	14560	14200						
		29,4		25000	24460	20650	17810	16020	15620						
44,0	25,5		25000	20880	17590	15150	13600								
	27,7		25000	22900	19310	16640	14960								
40,0	27,0		25000	22300	18800	16200									
		29,4		25000	24480	20660	17820								



2100 Series

Valid data up to 100 m HUH. Additional heights on request / 此数据仅适用于吊钩高度100m以下，其他高度请咨询。 / Datos válidos hasta 100 m de ABG. Para alturas mayores consultar / Données valables jusqu'à 100 m HSC. Pour des au-tres hauteurs, merci de nous consulter / Допустимые данные до 100 м ВПК. Для более высоких высот консультируйтесь