



| R (max) m | H1 m | R (min) m | H2 m | Rfs m |
|--------------|---------|--------------|---------|----------|
| 50 | 17,6 | 5,2 | 54,2 | 22 |
| 45 | 16,3 | 4,8 | 49,1 | 20 |
| 40 | 15,1 | 4,5 | 44,1 | 19 |
| 35 | 13,7 | 4,1 | 39,0 | 19 |
| 30 | 10,0 | 3,7 | 32,9 | 19 |

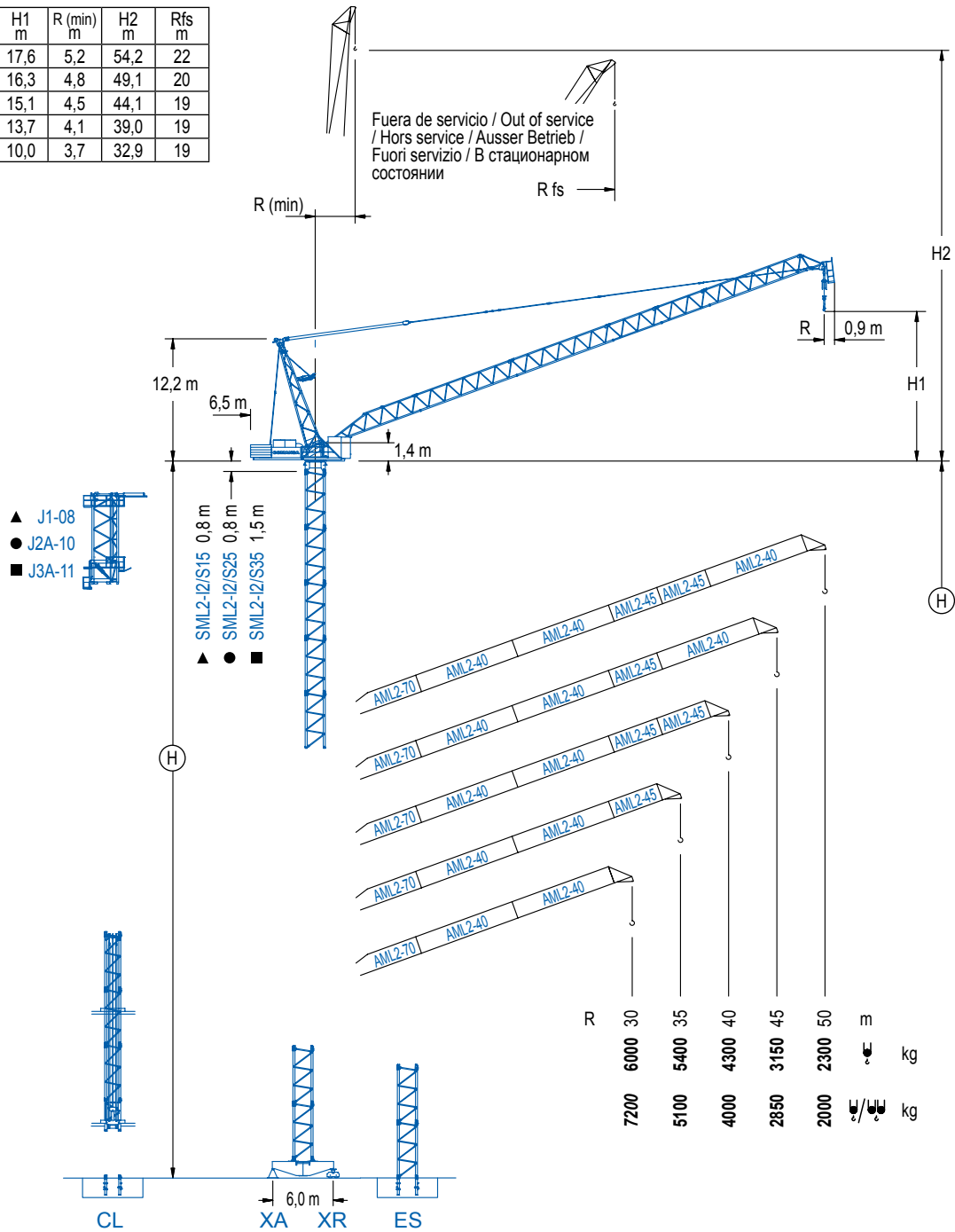
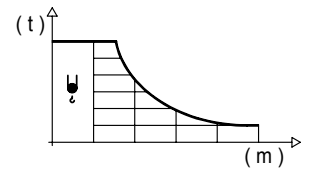


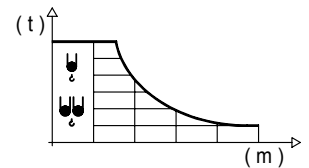
DIAGRAMA DE CARGAS

Load chart / Diagramme de charges / Lastdiagramm / Diagramma di carico / Диаграмма распределения нагрузки

| R (m) | ψ | RCmax (m) | 10 | 15 | 20 | 25 | 30 | 35 | 40 | 45 | 50 | ↔(m) ↓(kg) |
|-------|---|-----------|----|----|----|------|------|------|------|------|------|---------------|
| 50 | | 28,4 | | | | 6000 | 5480 | 4250 | 3410 | 2790 | 2300 | |
| 45 | | 29,5 | | | | 6000 | 5850 | 4650 | 3800 | 3150 | | |
| 40 | | 30,9 | | | | | 6000 | 5120 | 4300 | | | |
| 35 | | 31,9 | | | | | 6000 | 5400 | | | | |
| 30 | | 30,0 | | | | | 6000 | | | | | |

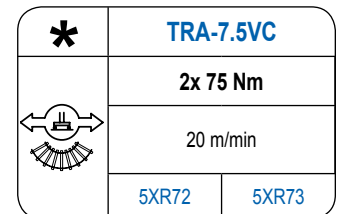
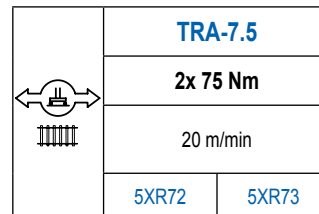
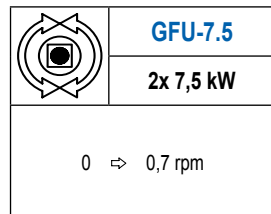
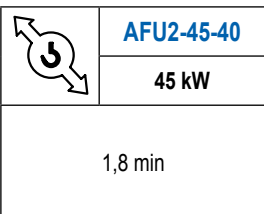
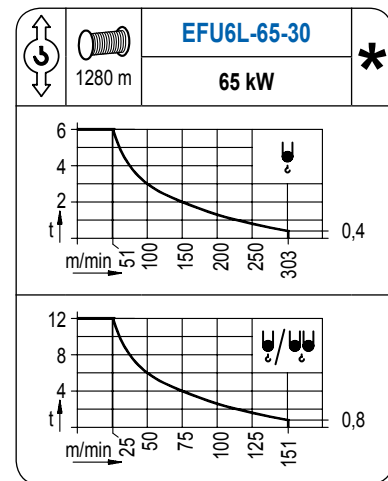
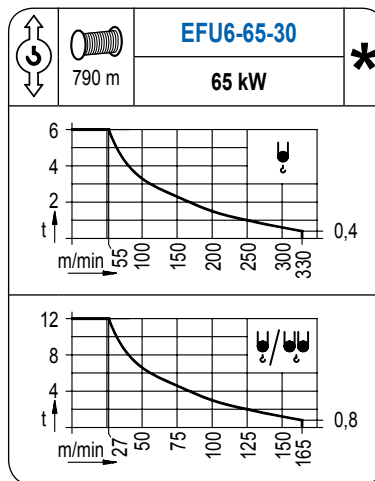
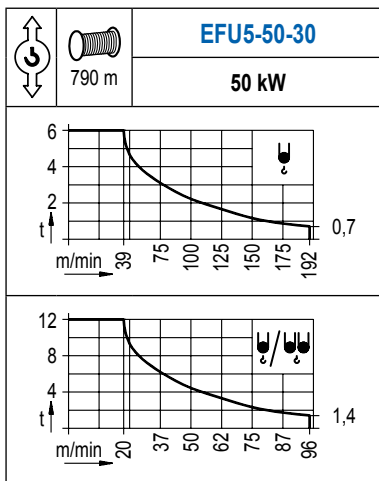


| R (m) | ψ/ψψ | RCmax (m) | 10 | 15 | 20 | 25 | 30 | 35 | 40 | 45 | 50 | ↔(m) ↓(kg) |
|-------|------|-----------|-------|-------|-------|------|------|------|------|------|------|---------------|
| 50 | | 11,8 | 12000 | 9000 | 6380 | 4880 | 3900 | 3210 | 2700 | 2310 | 2000 | |
| 45 | | 13,3 | 12000 | 10460 | 7520 | 5810 | 4680 | 3890 | 3300 | 2850 | | |
| 40 | | 14,6 | 12000 | 11660 | 8590 | 6750 | 5520 | 4650 | 4000 | | | |
| 35 | | 15,9 | | 12000 | 9390 | 7380 | 6040 | 5100 | | | | |
| 30 | | 16,8 | | 12000 | 10290 | 8430 | 7200 | | | | | |



MECANISMOS

Mechanisms / Mécanismes / Antriebe / Meccanismi / Механизмы



| POTENCIA / POWER / PUISSANCE / LEISTUNG / POTENZA / МОЩНОСТЬ | | | | Tensión de alimentación / Operating voltage / Tension de service / Betriebsspannung / Tensione di alimentazione / Напряжение источника питания | | Generador / Generator / Générateur / Генератор | |
|--|--|--|---|--|-----|--|--|
| Elevación / Hoist / Levage / Hub / Sollevamento / Тип механизма (подъем) | Abatimiento / Luffing / Releage / Einziehen / Brandeggio / Складывание | Giro / Slewing / Rotation / Drehbewegung / Rotazione / Поворот | Traslación / Travel / Translation / Verfahrbewegung / Traslazione / Ход | 400 V | 3ph | 215 kVA | |
| EFU5-50-30 | | | | 50 Hz | | 240 kVA | |
| EFU6-65-30 | AFU2-45-40 | (2x) GFU-7.5 | (2x) TRA-7.5 | | | 240 kVA | |
| EFU6L-65-30 | | | | | | | |

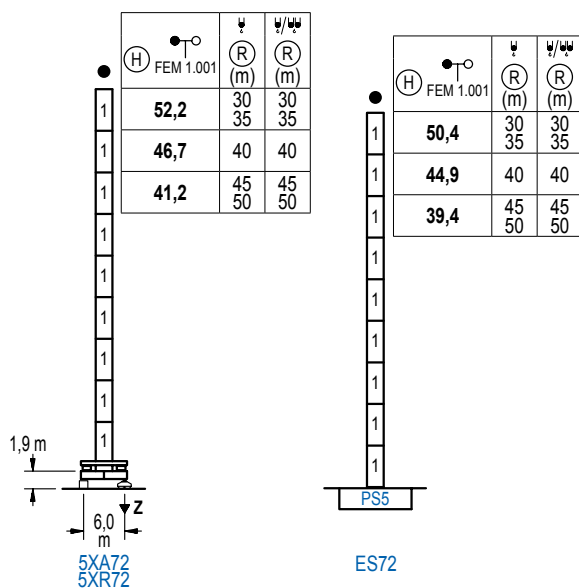
Opcional / Optional / En option / Kaufoption / Opzionale / Опционально

ALTURAS DE TORRE

Tower height / Hauteurs de tour / Turmhöhen / Altezza della torre / Высота башни

∅ 2,0 m

FEM 1.001



| n° | Ref. | ∅ | h |
|------------------|------|-----|-----|
| 1 | S25 | 2,0 | 5,5 |
| 1x S25 = 1x S25M | | | |

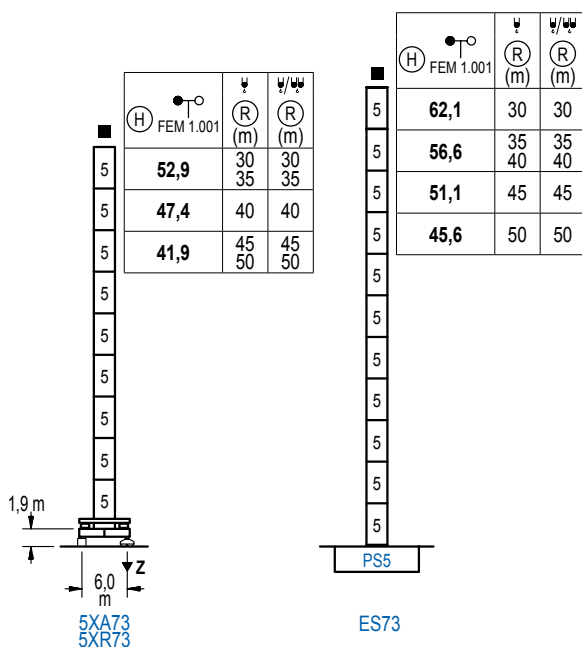
| | | |
|---------------|--|------------------|
| Z máx. | En servicio / In operation / En service / In Betrieb / In servizio / При работе | 5XR72..... 97 t |
| | Fuera de servicio / Out of service / Hors service / Ausser Betrieb / Fuori servizio / В стационарном состоянии | 5XR72..... 129 t |

ALTURAS DE TORRE

Tower height / Hauteurs de tour / Turmhöhen / Altezza della torre / Высота башни

∅ 2,5 m

FEM 1.001



| n° | Ref. | ∅ | h |
|------------------|------|-----|-----|
| 5 | S35 | 2,5 | 5,5 |
| 1x S35 = 1x S35M | | | |

| | | |
|---------------|--|------------------|
| Z máx. | En servicio / In operation / En service / In Betrieb / In servizio / При работе | 5XR73..... 96 t |
| | Fuera de servicio / Out of service / Hors service / Ausser Betrieb / Fuori servizio / В стационарном состоянии | 5XR73..... 124 t |

LCL Series

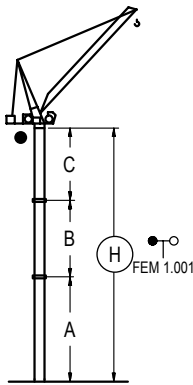
Otras zonas de viento o alturas superiores consultar / Other wind zones or additional hook heights on request / Autres zones de vent ou des hauteurs supplémentaires sur demande / Andere Windzonen oder weitere Hakenhöhen auf Anfrage / Per zone con velocità del vento particolari o altezze superiori consultare il fabbricante / При других ветренных зонах о при большой высоте проконсультируйтесь с нами

GRÚA ARRIOSTRADA

Braced crane / Grue à entretoisement / Abgespannter Kran / Gru ancorata / Нарациваемый кран

∅ 2,0 m

FEM 1.001



| | | 5XA72 | | | |
|-------|------|---------|-------|---------|------|
| R | ψ | 50 / 45 | 40 | 35 / 30 | |
| (m) | ψ/ψψ | 50 / 45 | 40 | 35 / 30 | |
| A max | | 29,4 | 34,9 | 40,4 | |
| A min | | 23,9 | 23,9 | 23,9 | |
| B max | | - | 22,0 | - | 27,5 |
| B min | | - | 16,5 | - | 16,5 |
| C max | | 33,8 | 33,8 | 33,8 | 39,3 |
| H max | | 63,2 | 85,2 | 68,7 | 90,7 |
| | | 79,7 | 101,7 | | |

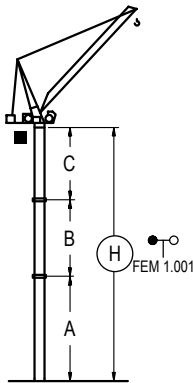
| | | ES72 | | | |
|-------|------|---------|------|---------|------|
| R | ψ | 50 / 45 | 40 | 35 / 30 | |
| (m) | ψ/ψψ | 50 / 45 | 40 | 35 / 30 | |
| A max | | 27,6 | 33,1 | 38,6 | |
| A min | | 22,1 | 22,1 | 22,1 | |
| B max | | - | 22,0 | - | 27,5 |
| B min | | - | 16,5 | - | 16,5 |
| C max | | 33,8 | 33,8 | 33,8 | 39,3 |
| H max | | 61,4 | 83,4 | 66,9 | 88,9 |
| | | 77,9 | 99,9 | | |

GRÚA ARRIOSTRADA

Braced crane / Grue à entretoisement / Abgespannter Kran / Gru ancorata / Нарациваемый кран

∅ 2,5 m

FEM 1.001



| | | 5XA73 | | | |
|-------|------|---------|-------|---------|------|
| R | ψ | 50 / 45 | 40 | 35 / 30 | |
| (m) | ψ/ψψ | 50 / 45 | 40 | 35 / 30 | |
| A max | | 29,4 | 34,9 | 40,4 | |
| A min | | 23,9 | 23,9 | 23,9 | |
| B max | | - | 22,0 | - | 27,5 |
| B min | | - | 16,5 | - | 16,5 |
| C max | | 34,5 | 34,5 | 34,5 | 40,0 |
| H max | | 63,9 | 85,9 | 69,4 | 91,4 |
| | | 80,4 | 107,9 | | |

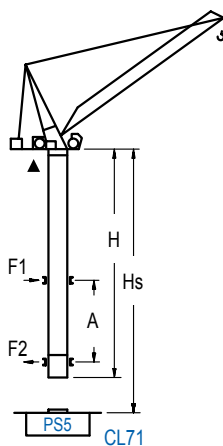
| | | ES73 | | | |
|-------|------|------|-------|---------|-------|
| R | ψ | 50 | 45 | 40 / 35 | 30 |
| (m) | ψ/ψψ | 50 | 45 | 40 / 35 | 30 |
| A max | | 33,1 | 38,6 | 44,1 | 49,6 |
| A min | | 22,1 | 22,1 | 22,1 | 22,1 |
| B max | | - | 22,0 | - | 33,0 |
| B min | | - | 16,5 | - | 16,5 |
| C max | | 34,5 | 34,5 | 40,0 | 45,5 |
| H max | | 67,6 | 89,6 | 78,6 | 100,6 |
| | | 89,6 | 117,1 | 95,1 | 128,1 |

GRÚA TREPADORA

Internal climbing crane / Grue avec cage de télescopage intérieure / Kran mit klettern im Gebäude / Gru in rampante in cavedio / Кран с самоподъемом

∅ 1,6 m

FEM 1.001



| H FEM 1.001 | ψ (R)(m) | ψ/ψψ (R)(m) | Hs < 600 m | |
|--|-------------|----------------|--------------|--------------|
| | | | A max (m) | A min (m) |
| 44,4 (S15-2 + 7x S15 + CLS15-08) | 30 35 | 30 35 | 19,6 | 13,0 |
| 42,4 (7x S15 + CLS15-08) | 40 | | 16,8 | 13,0 |
| 40,9 (2x S15-2 + 6x S15 + CLS15-08) | | 40 | 16,8 | 12,0 |
| 38,9 (S15-2 + 6x S15 + CLS15-08) | 45 | | 14,1 | 12,0 |
| 36,9 (6x S15 + CLS15-08) | | 45 | 14,1 | 12,0 |
| 35,4 (2x S15-2 + 5x S15 + CLS15-08) | 50 | | 14,1 | 12,0 |
| 31,4 (5x S15 + CLS15-08) | | 50 | 14,1 | 11,0 |

| n° | Ref. | ∅ | h |
|------------------|----------|-----|-----|
| | S15 | 1,6 | 5,5 |
| | S15-2 | 1,6 | 2,0 |
| | CLS15-08 | 1,6 | 3,1 |
| 1x S15 = 1x S15M | | | |

Otras zonas de viento, alturas superiores, arriostramientos o trepado interno consultar / Other wind zones, additional hook heights, tie frames or internal climbing on request / Autres zones de vent, des hauteurs supplémentaires, entretoisements ou grues avec cage de télescopage intérieure, sur demande / Andere Windzonen, weitere Hakenhöhen, Abspannungen zum Gebäude oder Klettern im Gebäude auf Anfrage / Per zone con velocità del vento particolari, altezze superiori, ancoraggi o rampante in cavedio, consultare il fabbricante / При других ветренных зонах, при большой высоте, привязках к зданию или наращивании крана внутри здания проконсультируйтесь с нами